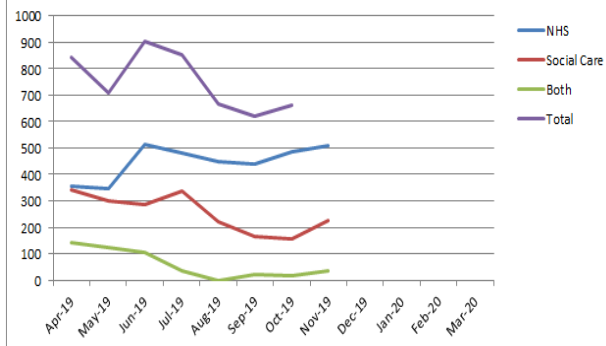
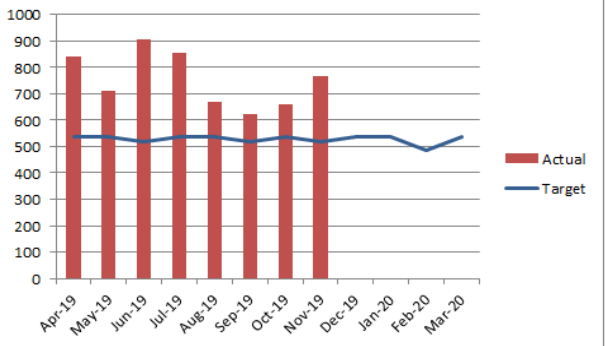


2019/20 Delayed Transfers of Care (DTOC)

	Apr	May	Jun	Jul	Aug	Sept	Oct	Nov	Dec	Jan	Feb	Mar
BCF Target *	519	536	519	536	536	519	536	519	536	536	484	536
Actual	842	711	905	853	668	622	661	768				

The DTOC trajectory has been calculated on the basis of there being 17.3 per day. Note it only takes a small number of patients to increase the figures.



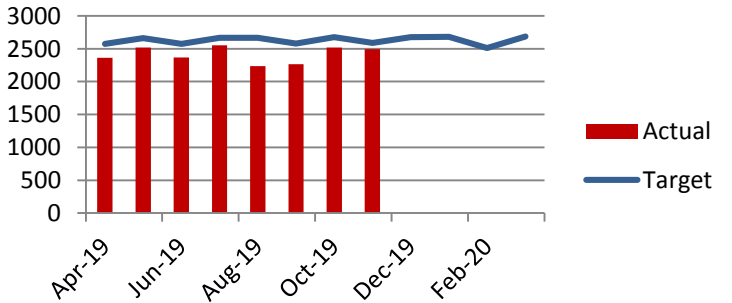
DTOC remains on the risk register. DTOC for M1-8 is above trajectory. The main reasons for delays in transfer are available nursing and residential beds in care homes, patient and family choice, and completion of assessment.

Transfer of Care Leadership Group carrying out a detailed review of DTOC for Lambeth and Southwark 17 January 2020, to understand where blocks are occurring.

Transfer of Care Leadership Group are implementing Choice Policy via governance groups in GSTT/KCH, to be updated at meeting 24 January.

Non-elective admissions

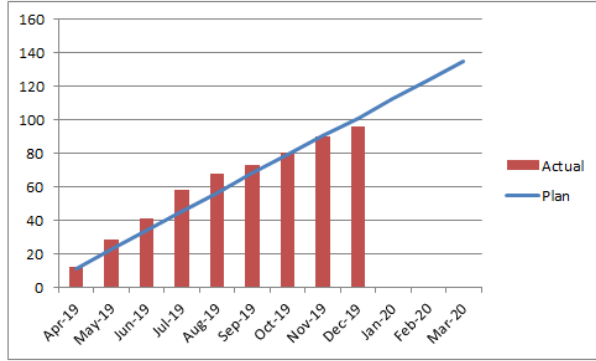
	Apr	May	Jun	Jul	Aug	Sept	Oct	Nov	Dec	Jan	Feb	Mar
BCF Target *	2574	2661	2574	2668	2668	2581	2675	2589	2675	2683	2510	2684
Actual	2361	2520	2366	2551	2235	2267	2519	2495				



BCF target figures are derived from the CCG's Operating Plan 2019/20. The first six months are reporting within plan. However, this area remains challenge based on activity reported in 2018/19 which showed an increase of 6.9% when compared to 2017/18.

Permanent admissions to care homes

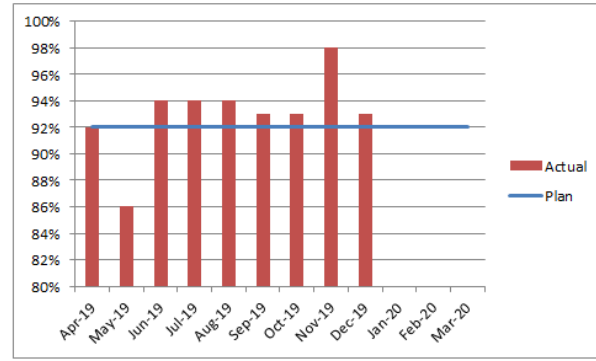
	Apr	May	Jun	Jul	Aug	Sept	Oct	Nov	Dec	Jan	Feb	Mar
BCF Target *	12	23	34	45	56	68	79	90	101	113	124	135
Actual	12	28	41	58	68	73	80	90	96			



We are performing within target on this indicator.

At home 91 days following reablement

	Apr	May	Jun	Jul	Aug	Sept	Oct	Nov	Dec	Jan	Feb	Mar
BCF Target *	92%	92%	92%	92%	92%	92%	92%	92%	92%	92%	92%	92%
Actual	92%	86%	94%	94%	94%	93%	93%	98%	93%			



The dip in performance for May related to small number of deaths within the 91 day period. Performance returned to 94% and has been above trajectory since.